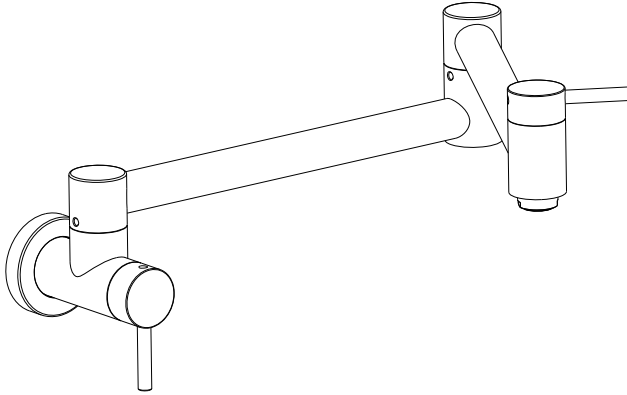
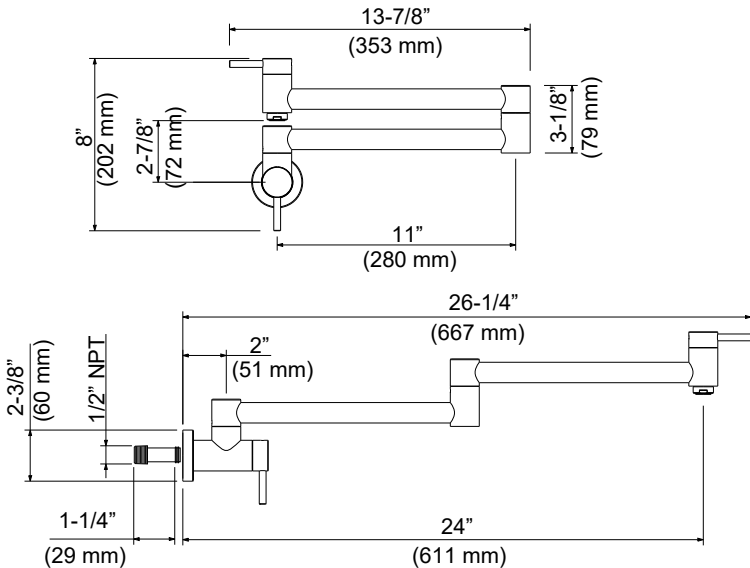


INSTALLATION GUIDE

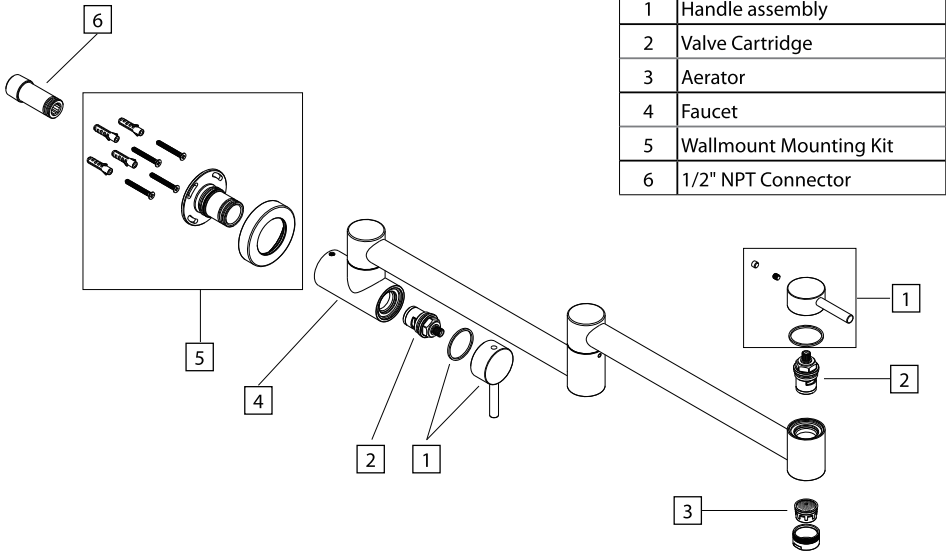


DIMENSIONS

Critical dimensions in mm



PARTS



1	Handle assembly
2	Valve Cartridge
3	Aerator
4	Faucet
5	Wallmount Mounting Kit
6	1/2" NPT Connector

INSTALLATION

1

CAUTION The **Mounting Adapter** must be installed on **Wall Studs** or **Wood Blocking** between Wall Studs and secured with screws.

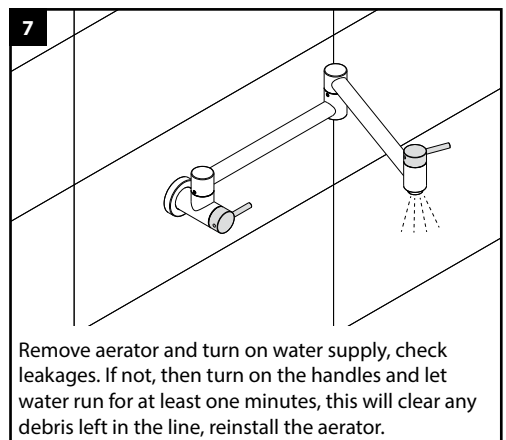
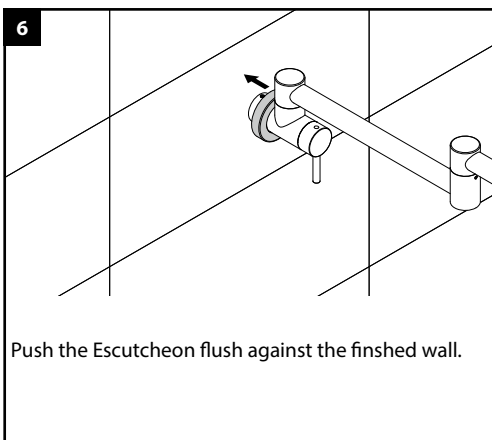
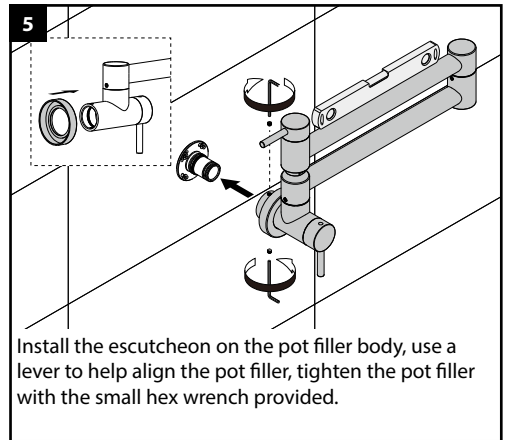
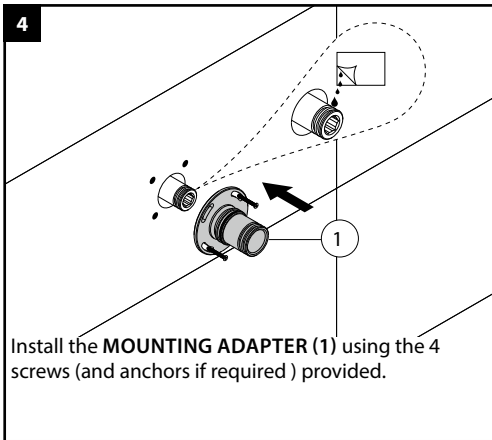
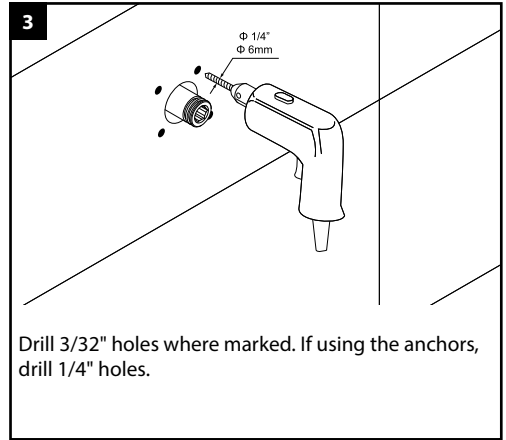
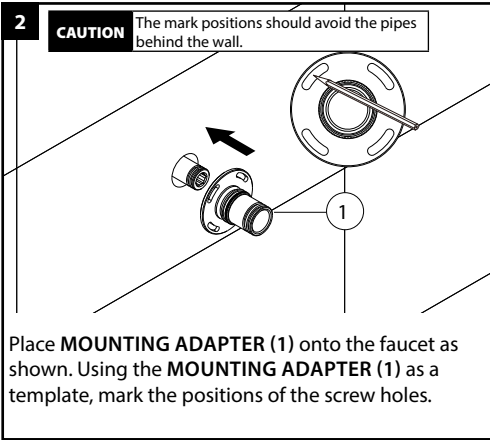
Wall Studs
Wood Blocking

NO YES

O-ring
1/2" NPT Connector
Wood Blocking
Wall Board
Finished Wall

Mounting Adapter
Wood Blocking
Wall Board
Finished Wall

Install the 1/2" NPT cold water connector. Secure supply pipe to the Cross Brace.
Important: The O-ring of Connector must extend from the face of the finished wall.
 Finish installing the wall board and the finished wall.



TROUBLE-SHOOTING

If you've followed the instructions carefully and your faucet still does not work properly, take these corrective steps.

Problem	Cause	Action
Low flow	Aerator may be clogged	Unscrew aerator to check rubber packing or replace aerator. (Note: some models require wrench to remove aerator.)
Inconsistent water flow pattern	Aerator is dirty or aged	Release aerator and check on rubber gasket if aged or replace with a new aerator.
Faucet is dirty	Caused by stubborn water spot	Clean with mild soap and warm water as often as possible.
Pull out Pot filler is not smooth	Pot filler is not lever or align	Reinstall the POT FILLER onto the MOUNTING ADAPTER . If not smooth persists, Reinstall the MOUNTING ADAPTER .

CLEANING AND CARE

Clean the faucet often with a soft cloth to keep it looking like new. For heavy cleaning you can use mild liquid detergents or non-abrasive liquid polisher. Rinse with water and dry with a soft cloth. Avoid abrasive cleaners, steel wool and harsh chemicals as these will dull the finish and void your warranty.

LIMITED LIFETIME WARRANTY

KIBI provides its customers with an extensive warranty as a result of our excellent workmanship and high quality components used in our products.

Mechanical warranty: A limited lifetime warranty is provided on all mechanical parts to be free from manufacturing defects in materials and workmanship under normal use for as long as the original purchaser owns their home.

Finish warranty: A 5-year warranty is provided on all KIBI faucet finishes to the original purchaser against manufacturing defects in materials and workmanship.

At its sole discretion, KIBI will repair or replace any part or finish that proves to be defective in material and/or workmanship under normal installation, use and service.

This warranty is extended to the original consumer owner, but does not cover installation or any other labor charges. In no event shall KIBI be liable for any incidental, consequential or special damages, installation cost, labor, travel time, freight costs incurred, lost profits, or contingent liabilities. KIBI makes no representation that its products comply with any or all local building or plumbing codes. It is the consumer's responsibility to determine local code compliance.